

OUR SPECIAL UV LAMP, IN SYNERGY WITH OUR GLUES, ENABLES FAST DRYING THROUGH PHOTOPOLYMERIZATION

©DGT EASY UV 280

©DGT EASY UV 280 is a work station designed to glue methacrylate (PMMA). It is made up of a trolley and a couple of 2 meter UV lamps equipped with a 180° tilting device, timer and protections.

It is the least complex and powerful lamp, but still apt for a professional use.

It is adaptable to your universal gluing ©DGT TABLE

The cost includes a professional training course in our headquarter. The course is 7hours long and dedicated to learning the DeskGlueTech™ with its gluing protocols, and to the use of the machinery purchased; also included the right, valid for a year and renewable yearly, to receive the technical consultancy of our technicians any time is necessary.

During the course, the operators that will take part in it, will learn to use all the machineries purchased and the new rules and protocols which DGT and its glues and instruments offer to work better, saving time.



©DGT SUPER UV 560 Manual Tilt

©DGT SUPER UV-560 Manual Tilt is a high-speed and powered work station designed to glue methacrylate (PMMA). It is made up of a trolley and a double couple UV lamps equipped with a tilting device and electrical and precision height-adjusting system. The lamps are UV ray special light sources with 560 Watt power. The lamp has a 90 degree operating range and the max. distance allowed for gluing is 260 mm. The workstation is completed by a timer and protections.

The workstation is high powered and manages manual adjustments It's a good compromise between work capacity and budget.

It is adaptable to your universal gluing ©DGT TABLE

The cost includes a professional training course in our headquarter. The course is 7hours long and dedicated to learning the DeskGlueTech™ with its gluing protocols, and to the use of the machinery purchased; also included the right, valid for a year and renewable yearly, to receive the technical consultancy of our technicians any time is necessary.

During the course, the operators that will take part in it, will learn to use all the machineries purchased and the new rules and protocols which DGT and its glues and instruments offer to work better, saving time.



©DGT SUPER UV-560 Electric Tilt



©DGT SUPER UV-560 Tilt Electric is a high-speed and powered work station designed to glue methacrylate (PMMA). It is made up of a trolley and a double couple UV lamps equipped with a tilting device and electrical and precision height-adjusting system that is totally electric and powered by the lamp itself. The lamps are UV ray special light sources with 560 Watt power. The lamp has a 90 degree operating range and the max. distance allowed for gluing is 730 mm (adjustable thanks to a switch on the lamp). The workstation is completed by a timer and protections.

The workstation is high power and very adjustable. It's a very manageable equipment and very flexible.

It is adaptable to your universal gluing ©DGT TABLE

The cost includes a professional training course in our headquarter. The course is 7hours long and dedicated to learning the DeskGlueTech™ with its gluing protocols, and to the use of the machinery purchased; also included the right, valid for a year and renewable yearly, to receive the technical consultancy of our technicians any time is necessary.

During the course, the operators that will take part in it, will learn to use all the machineries purchased and the new rules and protocols which DGT and its glues and instruments offer to work better, saving time.



©DGT PREMIUM UV-840 Electric Tilt



©DGT PREMIUM UV-840 Tilt Electric is a high- power work station designed to glue methacrylate (PMMA). It is made up of a trolley and a three couple UV lamps equipped with a tilting device and electrical and precision height-adjusting system that is totally electric and powered by the lamp itself. The lamps are UV ray special light sources with 840 Watt power. The lamp has a 120 degree operating range and the max. distance allowed for gluing is 730 mm (adjustable thanks to a switch on the lamp). The workstation is completed by a timer and protections.

The workstation is high power and very adjustable. It's a very manageable equipment and very flexible, especially useful for large dimension gluing.

It is adaptable to your universal gluing ©DGT TABLE

The cost includes a professional training course in our headquarter. The course is 7hours long and dedicated to learning the DeskGlueTech™ with its gluing protocols, and to the use of the machinery purchased; also included the right, valid for a year and renewable yearly, to receive the technical consultancy of our technicians any time is necessary.

During the course, the operators that will take part in it, will learn to use all the machineries purchased and the new rules and protocols which DGT and its glues and instruments offer to work better, saving time..



©DGT TABLE

©DGT TABLE is not a simple working table, but a real professional and highly technical table.



It is equipped with a special top that does not scratch the methacrylate and made with a material resistant to the most aggressive glues and solvents.

In case of usage, after years of works, it can be flipped and reused as both sides have been treated.

Weight is 50 Kg, measures are 2mt x 1mt. The table is completely stable and balanced

The lower top is useful to hold equipment and material through all the gluing phases, keeping the working area free and clean.

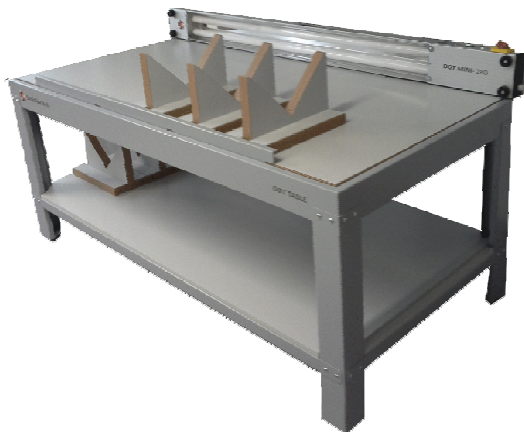
Can be totally unassembled to reduce transport and packaging costs

Accessorized with:

- 1- ©DGT MINI HANDHOLD UV LAMP 280WATT with 2 neon UV to facilitate the working phases.
This UV lamp, according to necessity, can be moved and fixed on all 4 sides of the table. Very useful when working with large dimensions.

The lamp can also be used separately from the table, it is completely portable.
- 2- N° 3 magnetic shoulders for 45° procedures and a positioning bar to hold them on the side of the table
- 3- N° 1 mirror/glass measuring 1.600mm x 800mm to allow to follow the gluing line and correct any mistakes

Version without accessories available only on request



©DGT MICROLED UVLed - 40 accessory

©DGT MICROLED UVLed - 40 Extremely light accessory for gluing PMMA, works at 40 Watt, and is made of a light body lamp that enables safe and practical movements.

4 Led UV measuring 60 cm , ON/OFF switch and adjusting handle.

Measures : 8 cm x 16 cm length 80 cm ,

Weight: 4,2 kg

UV Power : 40 watt (Uv area 60 cm x 30 cm)

Technology: UV Led

On/Off with no power delay with energy always available at 100%



DeskGlueTech Srl
Via dell'Edilizia 25/27
I-20026 Novate Milanese [Mi]
Italy
t.+39.02.89.76.75.30

p.iva IT08913540962 DGT copyright 2007-2012 - All rights reserved.